





ION
then
digital
1350 mm

016
NEED MORE LIGHT
Handheld Searchlight Hat
Illustration on paper
8" x 8"

024
STORM
Cartoon

025
MIDWINTER
Cartoon

0741
CALLIGRAPHY
Illustration
Illustration on paper
Illustration on paper
450 x 295 mm

0751
ENCHANTED
Jungo Lee
Graphics, charcoal
watercolour, digital
450 x 295 mm

0752
ABSORBED
Jungo Lee
Graphics, charcoal
watercolour, digital
450 x 295 mm





LOST IN REVERIE



LOST IN REVERIE
A SURREALISTIC WORLD
EDITED BY VICKI GOULD

This book sets out to capture the magic and mystique of dreamscapes from the comforting to the unsettling and everything else in between by exploring the enigmatic realms that blur the lines between the real and the surreal.

20th Anniversary





LOST IN REVERIE

ART & ILLUSTRATION INSPIRED BY DREAMS

A SURREALISTIC WORLD FULL OF VICTORIES

The book is a collection of art and illustration inspired by dreams. It features a variety of surrealistic and dreamlike scenes, including a large, multi-colored sphere in the sky, a field of flowers, and various floating objects. The book is a celebration of the power of dreams and the imagination.

JOSH HASKINS





LOST IN REVERIE
ART & ILLUSTRATION INSPIRED
A SURREALISTIC WORLD
EDITED BY VICKI VICKI
20th Anniversary





CIES

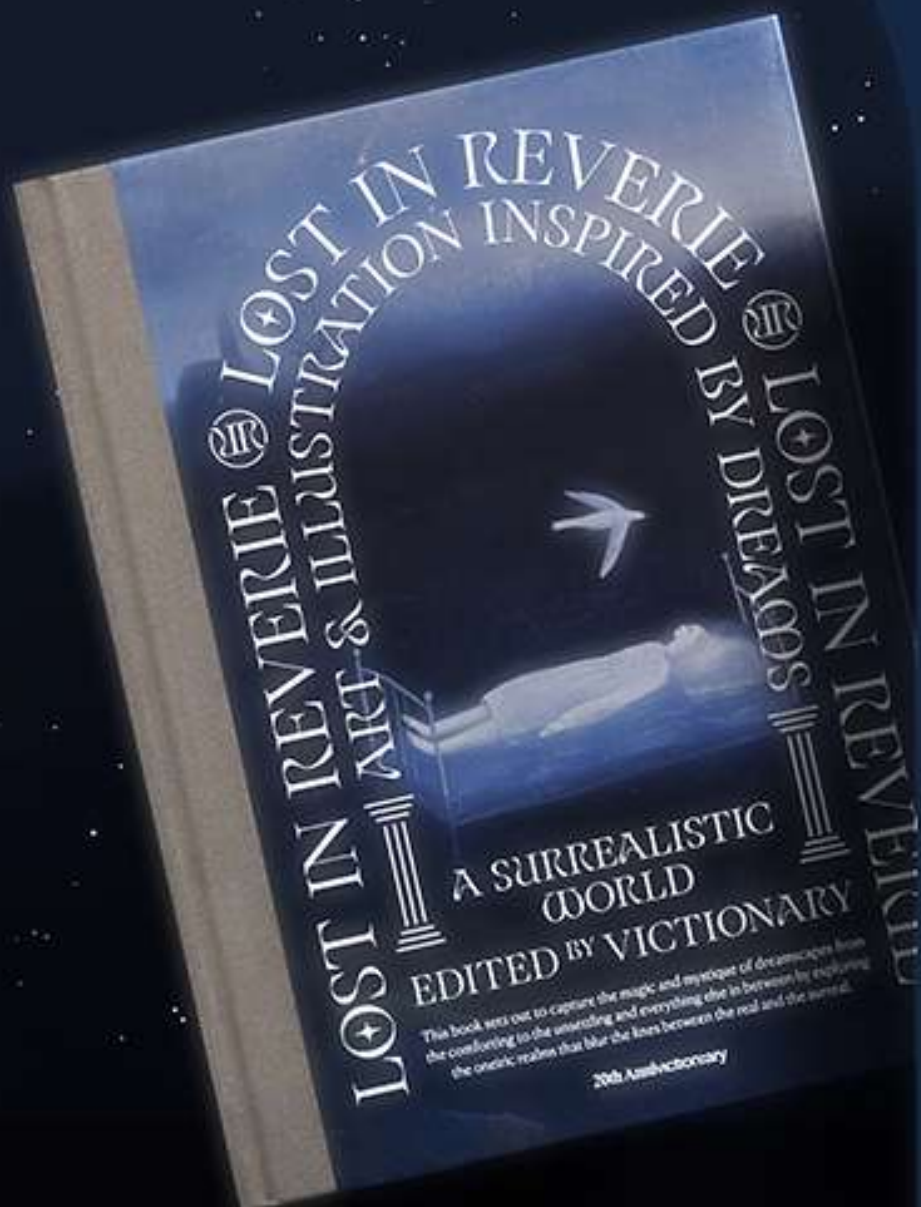
15
EDUCATION
Whoo! Chen
Period, digital
262 x 360 mm

016
NEED MORE LIGHT
Henning Sorensen/Henning
Illustration on paper
8" x 8"

0750
ENCHANTED
Jungo Lee
Graphic design
Illustration, digital
450 x 295 mm

0751
ENCHANTED
Jungo Lee
Graphic design
Illustration, digital
450 x 295 mm

0752
ABSORBED
Jungo Lee
Graphic design
Illustration, digital
450 x 295 mm



A SURREALISTIC
WORLD
EDITED BY VICKTORIA

The book sets out to capture the magic and mystique of dreamscapes from the comforting to the unsettling and everything else in between by exploring the oniric realm that blur the lines between the real and the surreal.

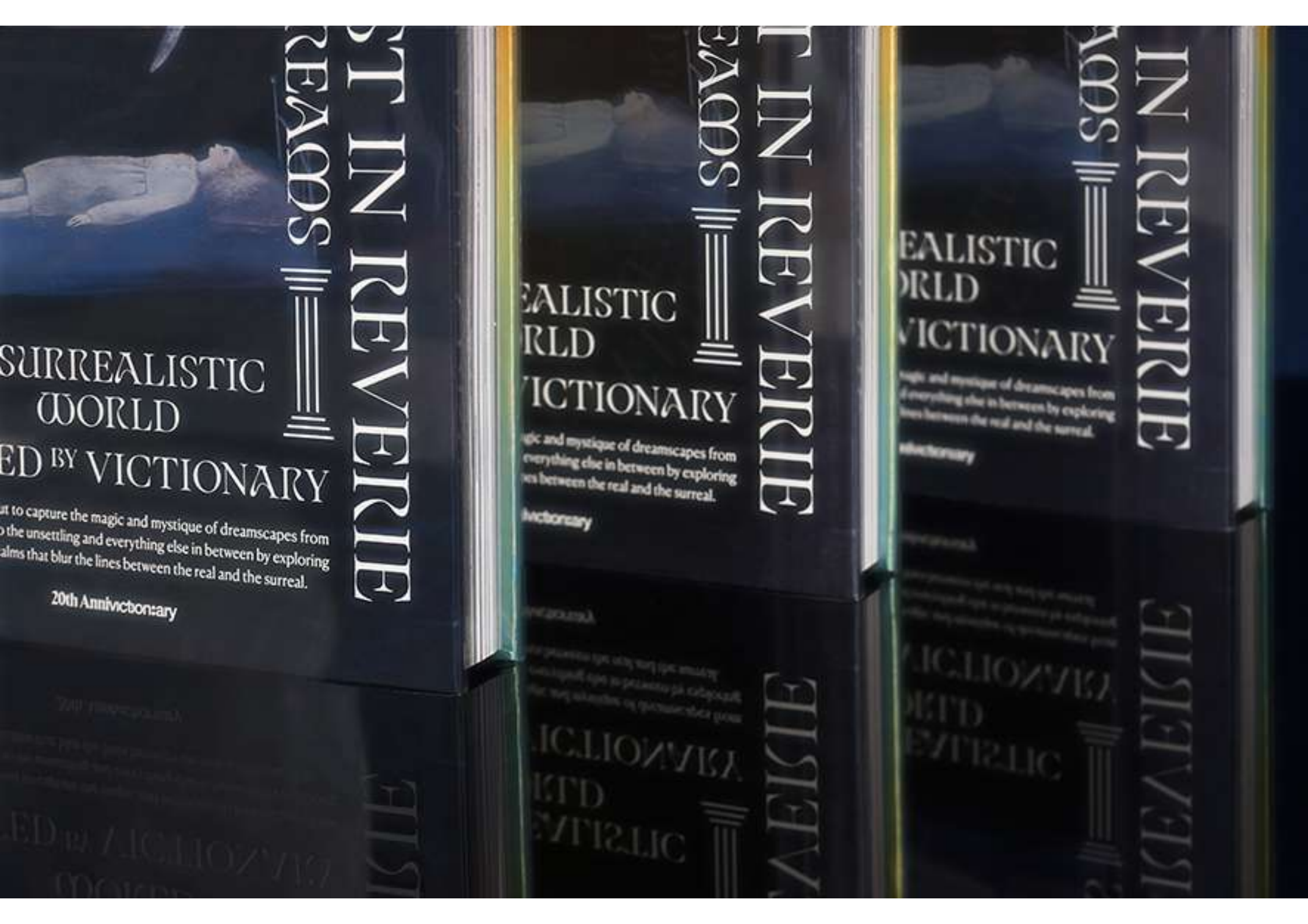
20th Anniversary

LOST IN REVERIE
EDITED BY VICKTORIA

LOST IN THE
MIND ART
A SURREALIST
WORLD
EDITED BY VICTOR

This book sets out to capture the magic and mystique of dreams
the comforting to the unsettling and everything else in between by
the oneiric realms that blur the lines between the real and the surreal

20th Anniversary



SURREALISTIC
WORLD
EDITED BY VICTORY

...to capture the magic and mystique of dreamscapes from
...the unsettling and everything else in between by exploring
...alms that blur the lines between the real and the surreal.

20th Anniversary

SURREALISTIC
WORLD
EDITED BY VICTORY

SURREALISTIC
WORLD
EDITED BY VICTORY

...to capture the magic and mystique of dreamscapes from
...the unsettling and everything else in between by exploring
...alms that blur the lines between the real and the surreal.

Victionary

SURREALISTIC
WORLD
EDITED BY VICTORY

SURREALISTIC
WORLD
EDITED BY VICTORY

...to capture the magic and mystique of dreamscapes from
...the unsettling and everything else in between by exploring
...alms that blur the lines between the real and the surreal.

Victionary

SURREALISTIC
WORLD
EDITED BY VICTORY

SURREALISTIC
WORLD
EDITED BY VICTORY

014
PORTRAIT
Marie Muravski
Digital
260 x 290 mm

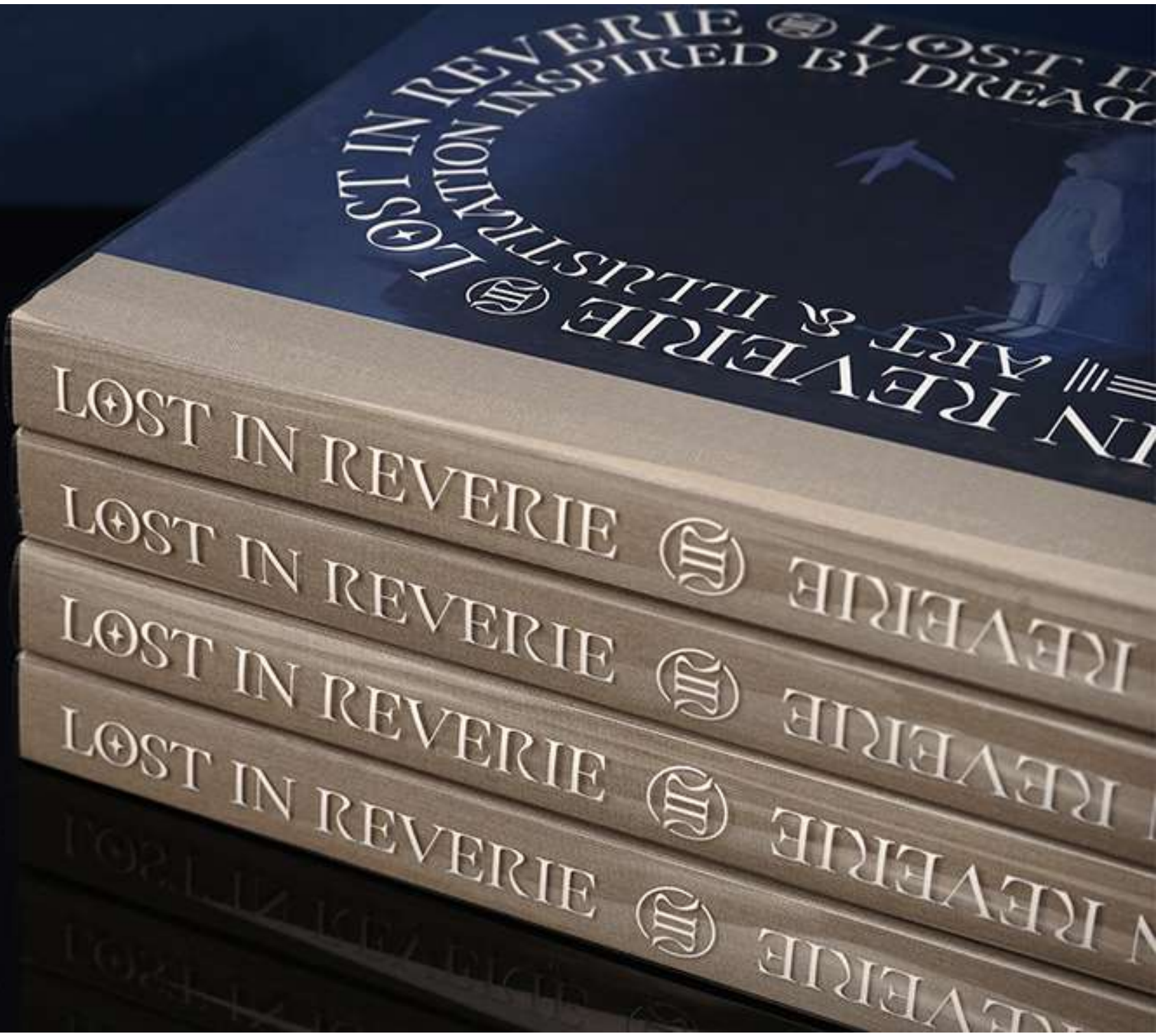
015
DREAMS
Marie Muravski
Digital
240 x 310 mm

016
WRITER
Marie Muravski
Digital
260 x 300 mm

071
TEXTURE
Jim Carr
Digital
330 x 300 mm

072
INVISIBLE CITY
Jim Carr
Digital
330 x 330 mm





LOST IN REVERIE

LOST IN REVERIE

LOST IN REVERIE

LOST IN REVERIE

LOST IN REVERIE

LOST IN REVERIE
AN ART & ILLUSTRATION MOVEMENT INSPIRED BY DREAMS



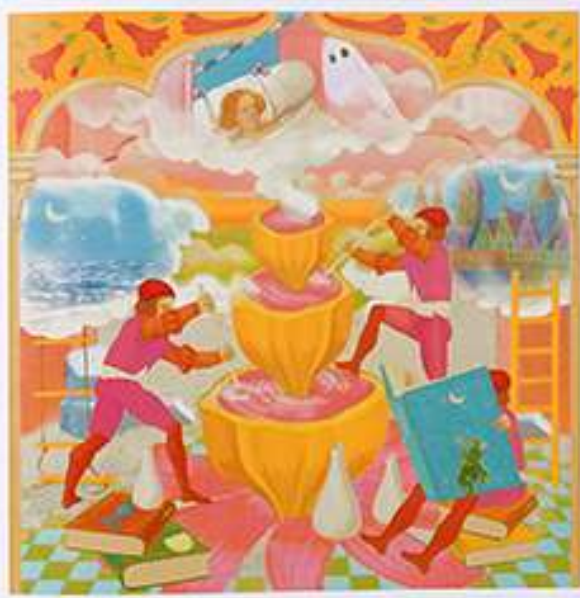
REVERIE

REVERIE

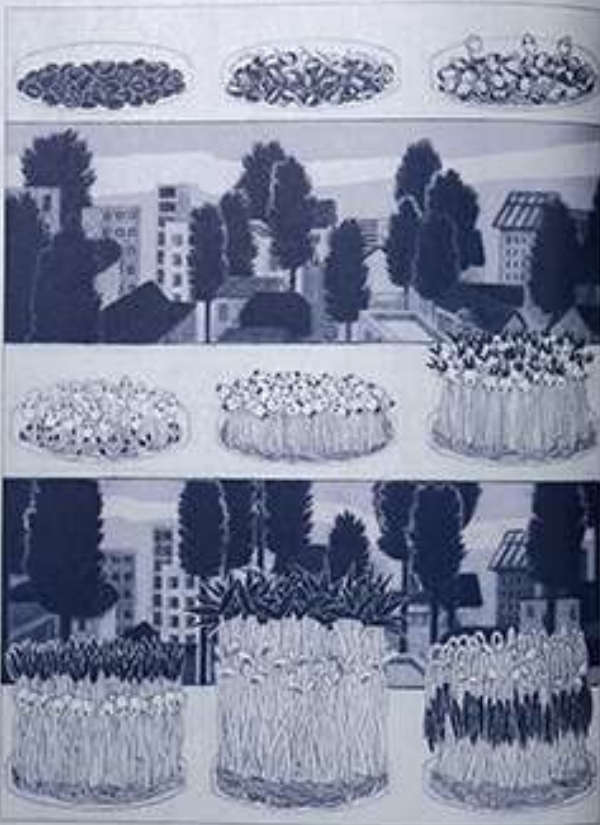
REVERIE

REVERIE









CROWNINESS 2/3



by PETERSON

DREAMERS OF THE LIGHT

MURAKAMI SAKA
 村上春樹

His fiction is a mixture of fantasy and realism, depicting a world where the boundaries between the two are blurred. His characters are often outsiders, and his stories are filled with a sense of melancholy and longing.

1942-1949

CHING YAN LIH

李銀燕

Her poetry is a blend of traditional Chinese and modernist influences. She explores themes of identity, culture, and the human condition with a delicate and evocative touch.

1977-1981

DANIEL LIBIANO

丹尼利比亞諾

His poetry is a vibrant and colorful exploration of the human experience. He draws on his multicultural background to create a rich and diverse body of work.

1963-1967

FEI COU XIA

費秋霞

Her poetry is a powerful and evocative expression of the human condition. She explores themes of love, loss, and the search for meaning in a complex world.

1907-1911

GUY BILLOUT

蓋比路

His poetry is a vibrant and colorful exploration of the human experience. He draws on his multicultural background to create a rich and diverse body of work.

1921-1927

HEATHER MUNDGE DEY HALL

Her poetry is a powerful and evocative expression of the human condition. She explores themes of love, loss, and the search for meaning in a complex world.

1966-1970

HUI CHAN

許珍

Her poetry is a vibrant and colorful exploration of the human experience. She draws on her multicultural background to create a rich and diverse body of work.

1953-1974

JUNG HO LEE

李榮浩

His poetry is a powerful and evocative expression of the human condition. He explores themes of love, loss, and the search for meaning in a complex world.

1928-1977

PEI HSIEN CHIO

裴顯喬

Her poetry is a vibrant and colorful exploration of the human experience. She draws on her multicultural background to create a rich and diverse body of work.

1979-1987

PETRA ERIKSSON

佩特拉艾利克森

Her poetry is a powerful and evocative expression of the human condition. She explores themes of love, loss, and the search for meaning in a complex world.

1992-1996

PHAN XUAN

潘軒

Her poetry is a vibrant and colorful exploration of the human experience. She draws on her multicultural background to create a rich and diverse body of work.

Her poetry is a powerful and evocative expression of the human condition. She explores themes of love, loss, and the search for meaning in a complex world.

1966-1971

PO-HSIEN HUANG

黃詩軒

Her poetry is a vibrant and colorful exploration of the human experience. She draws on her multicultural background to create a rich and diverse body of work.

1961-1966

HUI FOKER

許福

Her poetry is a powerful and evocative expression of the human condition. She explores themes of love, loss, and the search for meaning in a complex world.

1972-1976

SHUKUNSHI

舒坤士

Her poetry is a vibrant and colorful exploration of the human experience. She draws on her multicultural background to create a rich and diverse body of work.

1974-1978

VICKI LING

凌維琪

Her poetry is a powerful and evocative expression of the human condition. She explores themes of love, loss, and the search for meaning in a complex world.

1977-1979

WHOOI CHEN

陳維維

Her poetry is a vibrant and colorful exploration of the human experience. She draws on her multicultural background to create a rich and diverse body of work.

1972-1977

1961-1966

OSAKI

大崎

Her poetry is a powerful and evocative expression of the human condition. She explores themes of love, loss, and the search for meaning in a complex world.

1961-1966

OSAKI

大崎

Her poetry is a vibrant and colorful exploration of the human experience. She draws on her multicultural background to create a rich and diverse body of work.

1961-1966

OSAKI

大崎

Her poetry is a powerful and evocative expression of the human condition. She explores themes of love, loss, and the search for meaning in a complex world.

1961-1966

OSAKI

大崎

Her poetry is a vibrant and colorful exploration of the human experience. She draws on her multicultural background to create a rich and diverse body of work.

1961-1966

OSAKI

大崎

Her poetry is a powerful and evocative expression of the human condition. She explores themes of love, loss, and the search for meaning in a complex world.

1961-1966

OSAKI

大崎

Her poetry is a vibrant and colorful exploration of the human experience. She draws on her multicultural background to create a rich and diverse body of work.

1961-1966

Her poetry is a powerful and evocative expression of the human condition. She explores themes of love, loss, and the search for meaning in a complex world.

1961-1966

OSAKI

大崎

Her poetry is a vibrant and colorful exploration of the human experience. She draws on her multicultural background to create a rich and diverse body of work.

1961-1966

OSAKI

大崎

Her poetry is a powerful and evocative expression of the human condition. She explores themes of love, loss, and the search for meaning in a complex world.

1961-1966

OSAKI

大崎

Her poetry is a vibrant and colorful exploration of the human experience. She draws on her multicultural background to create a rich and diverse body of work.

1961-1966

OSAKI

大崎

Her poetry is a powerful and evocative expression of the human condition. She explores themes of love, loss, and the search for meaning in a complex world.

1961-1966

OSAKI

大崎

Her poetry is a vibrant and colorful exploration of the human experience. She draws on her multicultural background to create a rich and diverse body of work.

1961-1966

OSAKI

大崎

Her poetry is a powerful and evocative expression of the human condition. She explores themes of love, loss, and the search for meaning in a complex world.

1961-1966

1961-1966

OSAKI

大崎

Her poetry is a vibrant and colorful exploration of the human experience. She draws on her multicultural background to create a rich and diverse body of work.

1961-1966

OSAKI

大崎

Her poetry is a powerful and evocative expression of the human condition. She explores themes of love, loss, and the search for meaning in a complex world.

1961-1966

OSAKI

大崎

Her poetry is a vibrant and colorful exploration of the human experience. She draws on her multicultural background to create a rich and diverse body of work.

1961-1966

OSAKI

大崎

Her poetry is a powerful and evocative expression of the human condition. She explores themes of love, loss, and the search for meaning in a complex world.

1961-1966

OSAKI

大崎

Her poetry is a vibrant and colorful exploration of the human experience. She draws on her multicultural background to create a rich and diverse body of work.

1961-1966

OSAKI

大崎

Her poetry is a powerful and evocative expression of the human condition. She explores themes of love, loss, and the search for meaning in a complex world.

1961-1966

DREAMERS OF THE DARK

